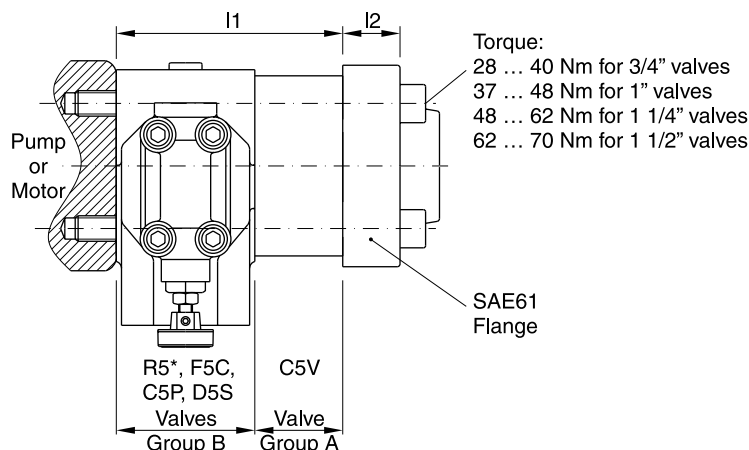


**BK bolt kits for SAE61 valves**



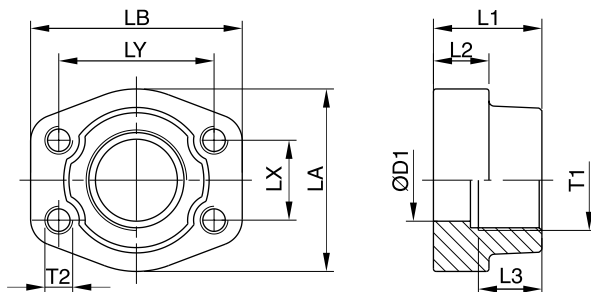
Port	Qty. of valves and group for each stack	I1	I2	UNC screws (12.9)	
				Dimension	Ordering code
3/4" SAE61	1 x A	45	16...22	3/8"-16 x 3/4"	BK-358-16330-0
	1 x B	60		3/8"-16 x 3/4"	BK-358-16350-0
	(1 x A) + (1 x B)	105		3/8"-16 x 5/2"	BK-358-16420-0
	2 x B	120		3/8"-16 x 6"	BK-358-16440-0
1" SAE61	1 x A	45	18...24	3/8"-16 x 3/4"	BK-358-16330-0
	1 x B	60		3/8"-16 x 3/4"	BK-358-16350-0
	(1 x A) + (1 x B)	105		3/8"-16 x 5/2"	BK-358-16430-0
	2 x B	120		3/8"-16 x 6/4"	BK-358-16450-0
1 1/4" SAE61	1 x A	50	21...25	7/16"-14 x 3 1/2"	BK-358-18340-0
	1 x B	75		7/16"-14 x 4 1/2"	BK-358-18380-0
	(1 x A) + (1 x B)	125		7/16"-14 x 6 1/2"	BK-358-18460-0
	2 x B	150		7/16"-14 x 7 1/2"	BK-358-18500-0
1 1/2" SAE61	1 x A	50	25...27	1/2"-13 x 3 3/4"	BK-358-20350-0
	1 x B	80		1/2"-13 x 5"	BK-358-20400-0
	(1 x A) + (1 x B)	130		1/2"-13 x 6 3/4"	BK-358-20470-0
	2 x B	160		1/2"-13 x 8"	BK-358-20520-0

1 bolt kit contains 4 screws.

**BK bolt kits for SAE62 valves**

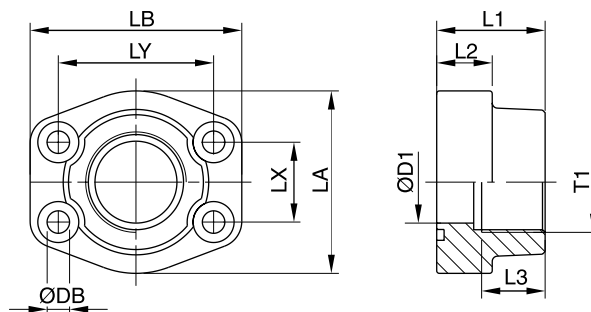
Series	Nominal size	I1	I2	UNC screws (12.9)	
				Dimension	Ordering code
C5V06	3/4"	45	21	3/8"-16 x 3/4"	BK-358-16330-0
C5V08	1"	45	25	7/16"-14 x 3 1/2"	BK-358-18340-0
C5V10	1 1/4"	50	27	1/2"-13 x 3 3/4"	BK-358-20350-0
R5V06-6	3/4"	60	21	3/8"-16 x 3/4"	BK-358-16350-0
R5V08-6	1"	60	25	7/16"-14 x 3/4"	BK-358-18350-0
R5V10-6	1 1/4"	75	27	1/2"-13 x 4 1/2"	BK-358-20380-0
R5V12-6	1 1/2"	80	30	5/8"-11 x 5/4"	BK-358-24410-0

**Inlet flange**



Port size	Order no. <sup>1)</sup>	Inlet flange								
		D1	L1	L2	L3	LA	LB	LX	LY	T2
<b>SAE61</b>										
G <sup>3</sup> / <sub>4</sub> "	PCFF33GSU	19	36	18	19	49	66	22.3	47.6	3/8" UNC
G1"	PCFF34GSU	25	38	18	19	53	71	26.2	52.4	3/8" UNC
G1 <sup>1</sup> / <sub>4</sub> "	PCFF35GSU	31	41	21	22	69	80	30.2	58.7	7/16" UNC
G1 <sup>1</sup> / <sub>2</sub> "	PCFF36GSU	38	44	25	24	77	94	35.7	69.9	1/2" UNC
<b>SAE62</b>										
G <sup>3</sup> / <sub>4</sub> "	PCFF63GSU	19	36	19	22	53	71	23.8	50.8	3/8" UNC
G1"	PCFF64GSU	25	44	24	24	69	80	27.8	57.2	7/16" UNC
G1 <sup>1</sup> / <sub>4</sub> "	PCFF65GSU	31	44	27	25	77	94	31.8	66.6	1/2" UNC
G1 <sup>1</sup> / <sub>2</sub> "	PCFF66GSU	38	51	30	28	89	106	36.5	79.3	5/8" UNC

**Outlet and tank port flange**

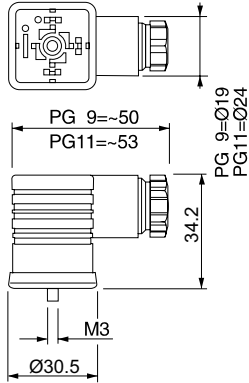


Port size	Order no. <sup>2)</sup>	Outlet and tank port flange									Srews
		D1	L1	L2	L3	LA	LB	LX	LY	DB	
<b>SAE61</b>											
G <sup>3</sup> / <sub>4</sub> "	PFF33GSU	19	36	18	18	49	66	22.3	47.6	10.5	3/8" x 1 1/2 UNC
G1"	PFF34GSU	25	38	18	20	53	71	26.2	52.4	10.5	3/8" x 1 1/2 UNC
G1 <sup>1</sup> / <sub>4</sub> "	PFF35GSU	31	41	21	22	69	80	30.2	58.7	11.5	7/16" x 1 1/2 UNC
G1 <sup>1</sup> / <sub>2</sub> "	PFF36GSU	38	44	25	24	77	94	35.7	69.9	13.5	1/2" x 1 3/4 UNC
<b>SAE62</b>											
G <sup>3</sup> / <sub>4</sub> "	PFF63GSU	19	36	19	18	53	71	23.8	50.8	10.5	3/8" x 1 1/2 UNC
G1"	PFF64GSU	25	44	24	20	69	80	27,8	57,2	11.5	7/16" x 1 1/2 UNC
G1 <sup>1</sup> / <sub>4</sub> "	PFF65GSU	31	44	27	22	77	94	31.8	66.6	15.0	1/2" x 1 3/4 UNC
G1 <sup>1</sup> / <sub>2</sub> "	PFF66GSU	38	51	30	24	89	106	36.5	79.3	17.0	5/8" x 2 1/4 UNC

<sup>1)</sup> 4-bolt flange with UNC threads.

<sup>2)</sup> 4-bolt flange including UNC screws and O-ring.

Description	Threaded cable joint	Body colour coding	Order no.
Plug EN 175301-803 <sup>1)</sup> , design type AF, protection class IP65 Voltages up to 250 V	PG 9	black, B grey, A	<b>5001710</b> <b>5001711</b>
	PG11	black, B grey, A	<b>5001716</b> <b>5001717</b>



Other plugs on request

<sup>1)</sup> EN 175301-803 (new) corresponding with DIN 43650 (old).